

**CONSTRUCTION PLAN**  
SCALE: 1/8"=1'-0"

**CONSTRUCTION LEGEND:**

- (A) PARTITION TO REMAIN
- (B) NEW DEMISING DRYWALL PARTITION 3-5/8" METAL STUDS 16" O.C. WITH ONE LAYER OF 5/8" GYPSUM BOARD EACH SIDE FROM FINISHED FLOOR TO DECK ABOVE. SEE DETAIL A DWG. TS-1
- (C) NEW DRYWALL PARTITION 3-5/8" METAL STUDS 16" O.C. WITH ONE LAYER OF 5/8" GYPSUM BOARD EACH SIDE W/ SOUND ATTENUATION BATTS FROM FINISHED FLOOR TO 10'-0" A.F.F. SEE DETAIL B DWG. TS-1
- (D) NEW LOW DRYWALL PARTITION 2x4 F.R. WOOD STUDS 16" O.C. WITH ONE LAYER OF 5/8" GYPSUM BOARD EACH SIDE FROM FINISHED FLOOR TO 6'-8" A.F.F. W/ 1-1/2" WOOD CAP SEE DETAIL C DWG. TS-1
- (E) MANUFACTURED BEER BOX BY OTHERS W/ 3-5/8" METAL STUDS AND 1 LAYER 5/8" GYP. BD. ONE SIDE FROM TOP OF BEERBOX TO DECK ABOVE. PROVIDE ANGLED BRACING AT 4'-0" O.C.

- (1) DOOR NUMBER (SEE DOOR SCHEDULE)
- (2) DOOR TYPE
- (3) CORRIDOR ROOM NAME ROOM NUMBER WALL FINISH BASE FLOOR FINISH
- (4) SECTION/ELEVATION REFERENCE NUMBER DRAWING REFERENCE NUMBER
- (5) INDICATES DRAWING NOTE #
- (6) FLOOR FINISH SYMBOL  
E = EXIST'G TO REMAIN  
C = CONCRETE SEALER SEE FINISH SCHEDULE  
VT# = VINYL TILE SEE FINISH SCHEDULE
- (7) INDICATES WALL FINISH  
RV = REMOVE EXIST'G VINYL  
EV = EXIST'G VINYL TO REMAIN  
P = PAINT  
V = VINYL

**CONSTRUCTION NOTES**

- 1 ALL EXISTING TO REMAIN. WALLS TO BE PREPPED TO RECEIVE NEW FINISH
- 2 ALL WALLS AND COLUMNS TO BE PAINTED P-1, UNLESS NOTED OTHERWISE. WALLS IN SALES AREA TO BE PAINTED UP TO 12'A.F.F.
- 3 ALL WALLS IN SALES AREA ABOVE 12'-0"A.F.F. PAINTED P-2 ACCENT
- 4 ALL DOORS AND FRAMES TO BE PAINTED P-2
- 5 PLASTIC LAMINATE COUNTERS PROVIDE (2) GROMMETS IN FIELD
- 6 WALK-IN BEER COOLER BY OTHERS
- 7 EXTEND EXTERIOR WALL FURRING STRIPS, INSULATION AND GYP. BD. TO DECK ABOVE MATCH EXIST'G. ALL EXTERIOR WALLS EXCEPT AT STOCK ROOM
- 8 STOCK ROOM TO RECEIVE CLEAR CONCRETE SEALER (S1)

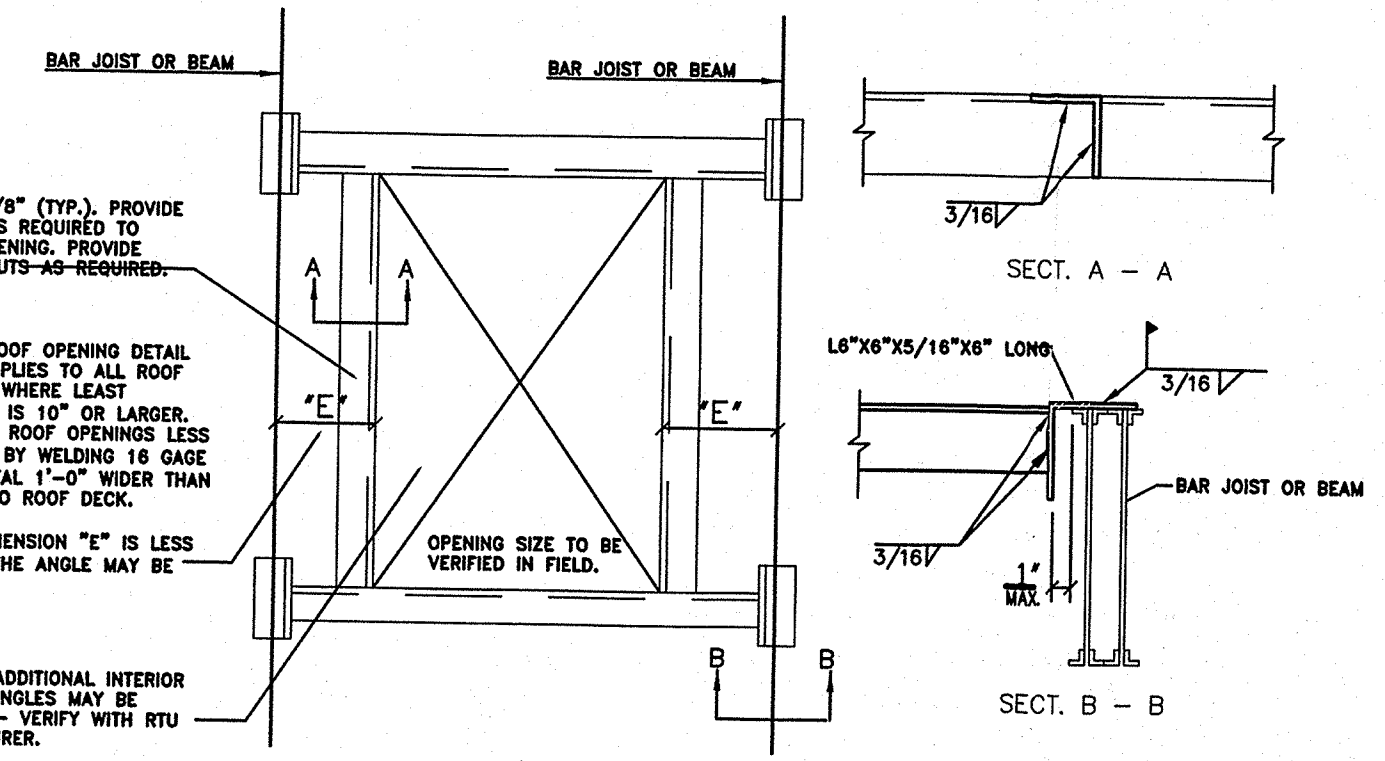
**CONCRETE CUTTING AND PATCHING NOTE**  
ALL CONCRETE PATCHING TO BE WITH 4000 PSI CONCRETE. COMPACT BACKFILL AT ALL WASTE PIPE EXCAVATIONS TO 95% MAXIMUM DRY DENSITY. PLACE AND FINISH APPROX 7'x23' AREA W/ SLAB 4000 PSI CONC. W/ 6X6 W1.4xW1.4 WIRE MESH

**REFLECTED CEILING PLAN**

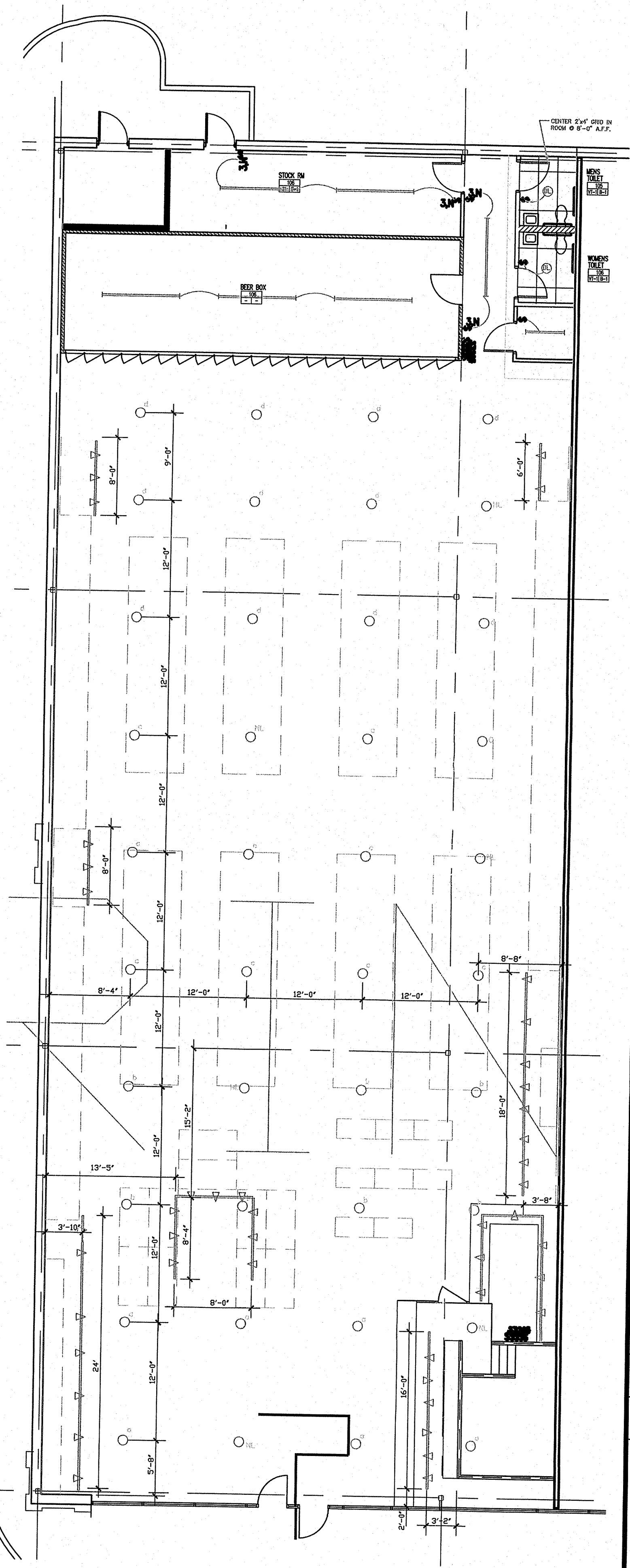
- (1) TRACK LIGHTING W/ PENDANT FIXTURES
- (2) FLUORESCENT STRIP FIXTURE CHAIN MOUNTED EXCEPT IN BEERBOX
- (3) GLASS HIGH BAY METAL HALIDE FIXTURE 12'AFF TO BOTTOM
- (4) RECESSED FLUORESCENT DOWNLIGHT. IN ACoust. CLG.

**REFLECTED CEILING NOTES:**

- 1 REFER TO ENGINEERING DRAWINGS FOR ALL LIFE SAFETY DEVICES
- 2 THIS PLAN IS FOR LIGHTING LOCATIONS ONLY REFER TO ENGINEERING DWGS FOR ALL CIRCUITING AND SPEC'S
- 3 PAINT CEILING AND STRUCTURE FLAT BLACK



**TYPICAL ROOF OPENING STRUCTURE**  
N.T.S.



**REFLECTED CEILING PLAN**  
SCALE 1/8"=1'-0"

ALL DRAWINGS AND WRITTEN MATERIAL APPEARING HEREIN CONSTITUTE ORIGINAL AND UNPUBLISHED WORK OF THE ARCHITECT AND MAY NOT BE DUPLICATED, USED OR DISCLOSED WITHOUT WRITTEN CONSENT OF THE ARCHITECT.

| No. | Issue / Revision            | Date     | By  |
|-----|-----------------------------|----------|-----|
| 2   | UPDATED PER LANDLORD REVIEW | 3.28.07  | CGA |
| 1   | ISSUED FOR LANDLORD REVIEW  | 02.23.07 | CGA |

ARCHITECT  
**C. G. Albrecht, AIA, Architect Inc.**  
253 Passaic Avenue  
Fairfield, New Jersey 07004  
Tel. (973)276-5940  
Fax (973)276-5944

Project  
**WINE COUNTRY**  
Hadley Center  
South Plainfield, New Jersey

**PLANS AND LEGENDS**

|                       |                   |
|-----------------------|-------------------|
| Project No.<br>206-42 | Date<br>02.13.07  |
| Drawn By<br>JD/JWB    | Scale<br>as noted |

Floor  
N.J. # 08221  
**Christian G. Albrecht**  
253 Passaic Ave.  
Fairfield, New Jersey 07004