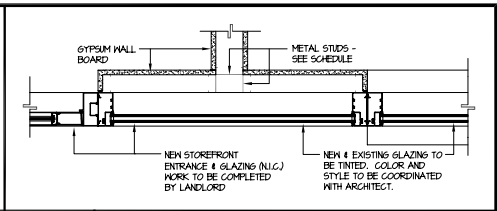
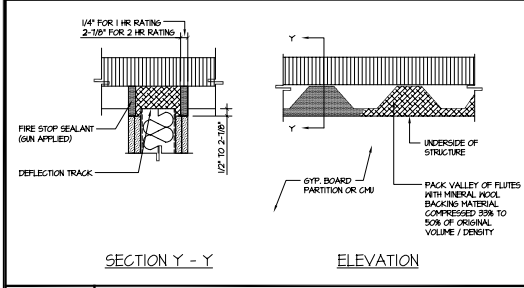


A TYPICAL PARTITION DETAIL
1 1/2" = 1'-0"
PARALLEL TO DECKING FLUTES

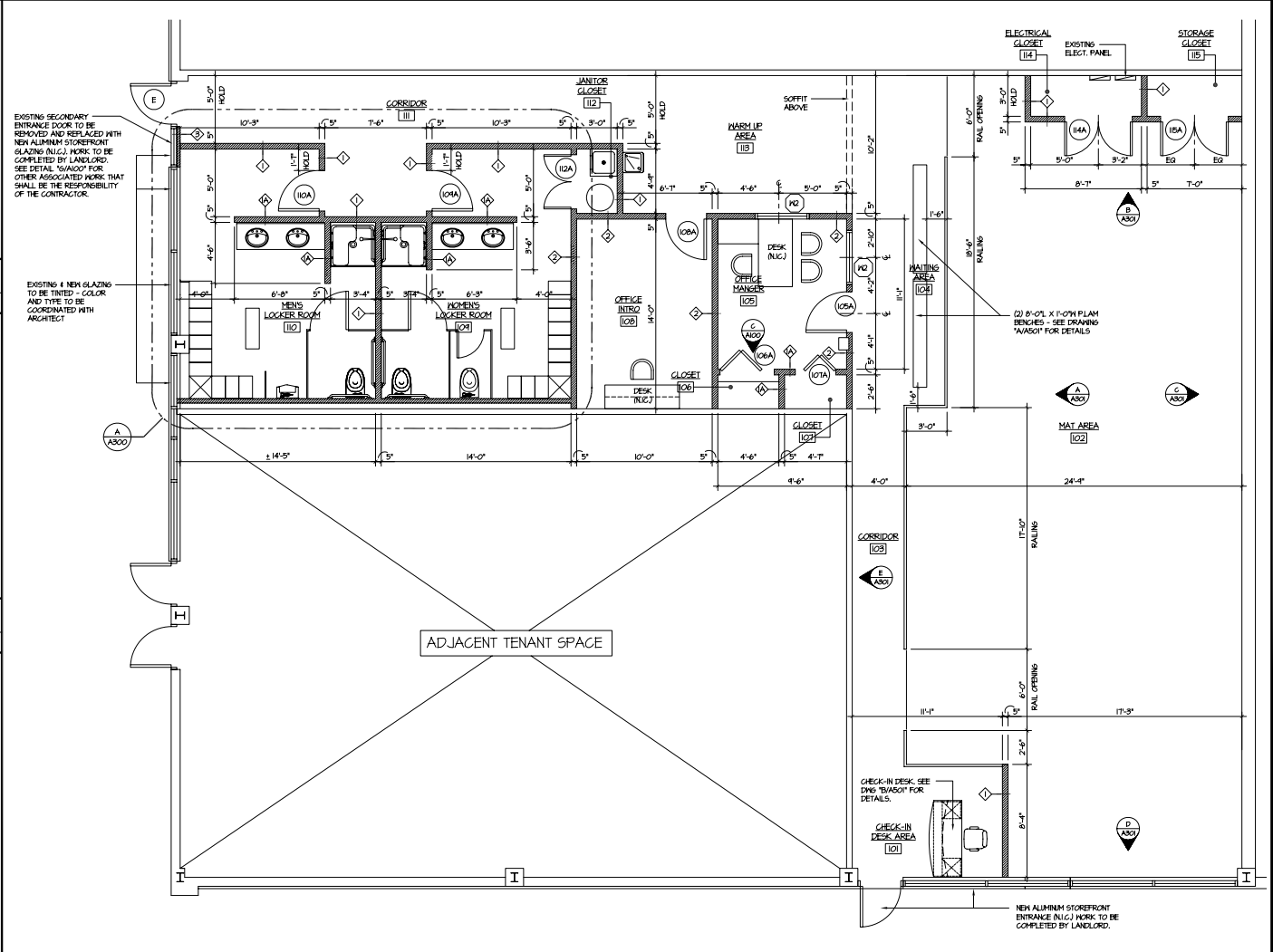
MARK	THICKNESS	DETAIL	DESCRIPTION	HEIGHT
◇	5" NOMINAL 4 7/8" ACTUAL		3 5/8" 20 GAUGE GALV. STEEL STUDS @ 16" O.C. WITH 5/8" 6TPSM HALL BOARD ON EACH EXPOSED FACE. PROVIDE MOISTURE RESISTANT GYPSUM HALL BOARD IN LOCKER ROOMS AND JANITOR CLOSET.	1" - TO UNDERSIDE OF EXISTING ROOF DECK 14" - 6" ABOVE FINISHED CEILING
◇	5" NOMINAL 4 7/8" ACTUAL		3 5/8" 20 GAUGE GALV. STEEL STUDS @ 16" O.C. WITH 5/8" 6TPSM HALL BOARD ON EACH EXPOSED FACE AND 3 1/2" SOUND ATTENUATION PROVIDE MOISTURE RESISTANT GYPSUM HALL BOARD IN LOCKER ROOMS AND JANITOR CLOSET.	TO UNDERSIDE OF EXISTING ROOF DECK
◇	5" NOMINAL 3 1/8" ACTUAL		2 1/2" 20 GAUGE GALV. STEEL STUDS @ 16" O.C. WITH 5/8" MOISTURE RESISTANT GYPSUM HALL BOARD ON EXPOSED FACE.	6" ABOVE FINISHED CEILING



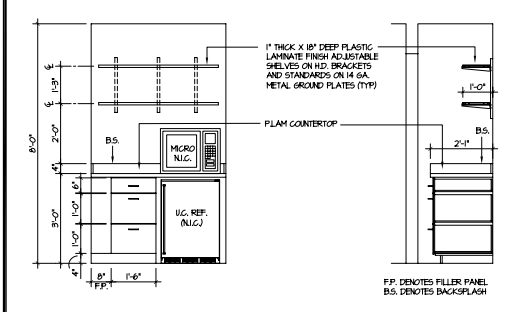
G PARTITION DETAIL
1 1/2" = 1'-0"
TYPE 'B'



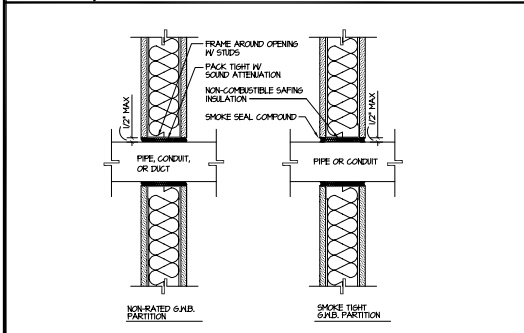
B TYPICAL PARTITION DETAIL
1 1/2" = 1'-0"
PARALLEL TO DECKING FLUTES



F FLOOR PLAN
1/4" = 1'-0"



C INTERIOR ELEVATION
1/2" = 1'-0"
CLOSET 106



D PIPE PENETRATION DETAILS
NO SCALE

NO.	REVISION/DESCRIPTION	DATE	BY:
1	ISSUED FOR BIDDING / FIRST APPLICATION	2/17/07	

PARRY M. PENNINO ARCHITECTS PC
 5 Park Avenue
 Park Ridge, New Jersey 07656
 Telephone: (201) 306-6453
 Facsimile: (201) 306-6458

LICENSE:
 REG. NO. 44575
 NEW YORK
 Lic. No. 024975-1
 NEW JERSEY
 Lic. No. 12456

PROJECT:
Tiger Schulmann's
 4957 Shelton Road
 Hadley Center
 South Plainfield, New Jersey

DRAWING:
 CONSTRUCTION
 FLOOR PLAN
 NOTES
DRAWN BY:
 FTD
REVIEWED BY:
 DV
DATE:
 23 FEBRUARY 2007
SCALE:
 AS NOTED
DRAWING NUMBER:

A100